

Biotinylated Human HLA-A*02:01&B2M&P53 WT (HMTEVVRRC) Monomer Protein



Cat. No. MHC-HM416B

Description

Source	Recombinant Biotinylated Human HLA-A*02:01&B2M&P53 WT (HMTEVVRRC) Monomer Protein is expressed from HEK293 with His tag and Avi tag at the C-Terminus. It contains Gly25-Thr305(HLA-A*02:01), Ile21-Met119(B2M) and HMTEVVRRC peptide.
Accession	A0A140T913(HLA-A*02:01)&P61769(B2M)&HMTEVVRRC
Molecular Weight	The protein has a predicted MW of 50.5 kDa. Due to glycosylation, the protein migrates to 51-60 kDa based on Bis-Tris PAGE result.
Endotoxin	Less than 1EU per µg by the LAL method.
Purity	> 95% as determined by Bis-Tris PAGE > 95% as determined by HPLC

Formulation and Storage

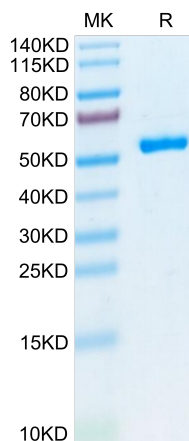
Formulation	Lyophilized from 0.22µm filtered solution in PBS (pH 7.4). Normally 8% trehalose is added as protectant before lyophilization.
Reconstitution	Centrifuge the tube before opening. Reconstituting to a concentration more than 100 µg/ml is recommended. Dissolve the lyophilized protein in distilled water.
Storage	-20 to -80°C for 12 months as supplied from date of receipt. -80°C for 3 months after reconstitution. Recommend to aliquot the protein into smaller quantities for optimal storage. Please minimize freeze-thaw cycles.

Background

p53 is a tumor suppressor protein. Under stressful conditions, p53 tightly regulates cell growth by promoting apoptosis and DNA repair. When p53 becomes mutated, it loses its function, resulting in abnormal cell proliferation and tumor progression. Depending on the p53 mutation, it has been shown to form aggregates leading to negative gain of function of the protein. p53 mutant associated aggregation has been observed in several cancer tissues and has been shown to promote tumor growth.

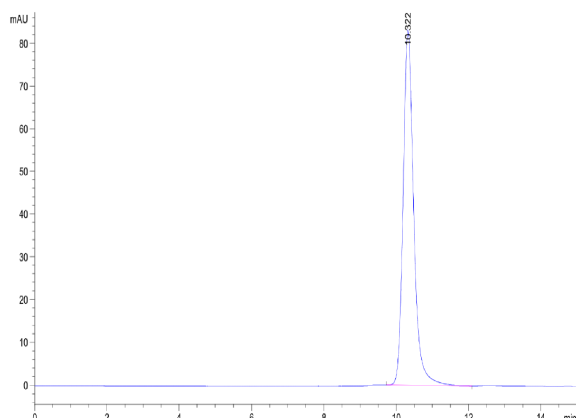
Assay Data

Bis-Tris PAGE



Biotinylated Human HLA-A*02:01&B2M&P53 WT (HMTEVVRRC) Monomer on Bis-Tris PAGE under reduced condition. The purity is greater than 95%.

SEC-HPLC



The purity of Biotinylated Human HLA-A*02:01&B2M&P53 WT (HMTEVVRRC) Monomer was greater than 95% as determined by SEC-HPLC.

Biotinylated Human HLA-A*02:01&B2M&P53 WT (HMTEVRRRC) Monomer Protein

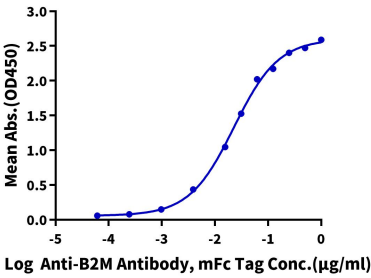


Cat. No. MHC-HM416B

Assay Data

ELISA Data

Biotinylated Human HLA-A*02:01&B2M&P53 WT (HMTEVRRRC) Monomer, His Tag ELISA
0.1µg Biotinylated Human HLA-A*02:01&B2M&P53 WT (HMTEVRRRC) Monomer, His Tag Per Well



Immobilized Biotinylated Human HLA-A*02:01&B2M&P53 WT (HMTEVRRRC) Monomer, His Tag at 1µg/ml (100µl/well) on the streptavidin precoated plate (5µg/ml). Dose response curve for Anti-B2M Antibody, mFc Tag with the EC50 of 22.8ng/ml determined by ELISA (QC Test).